

Would Facilitating Early Prosocial Behaviour Help Prevent Later Violence?

Dale Hay

Cardiff University

Wales

Faciliter la conduite 'prosociale' et prévenir la violence?

Dale Hay

L'Université de Cardiff

Pays de Galles

Research Questions (Les Questions)

- When do children first show prosocial behaviour?
- Does early prosocial behaviour protect children against later disruptive behaviour?
- À quel age est-il que les enfants demontrent la conduite 'prosociale'?
- Est-ce que la conduite 'prosociale' est un 'facteur protecteur'?

Question 1

- When do children first develop prosocial behaviour?
- À quel age est-il que les enfants demontrent la conduite 'prosociale'?

Developmental Milestones (Les jalons de développement)

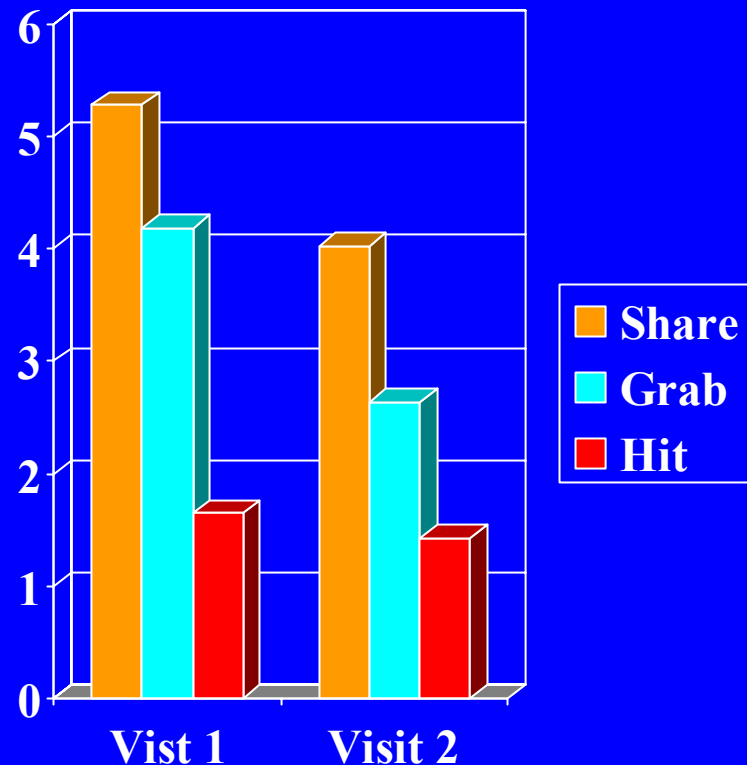
- 6 months: crying in response to peers' cries
- 9-12 months: showing and giving objects to others
- 1-2 years: helping, cooperating, and comforting others
- 6 mois: pleurer quand les autres enfants pleurent
- 9-12 mois: montrer et donner les objets
- 1-2 ans: aider, coopérer, et consoler les autres

South London Study of Early Social Development

- 66 toddlers observed at home with mothers, familiar peers, and peers' mothers
- Age at first visit 18, 24 or 30 months
- Follow-up visit 6 months later
- Peer Interaction Coding System (PICS)
- Toddler Personality Inventory (TPI)

Sharing and Aggression (Le Partage et L'Aggression)

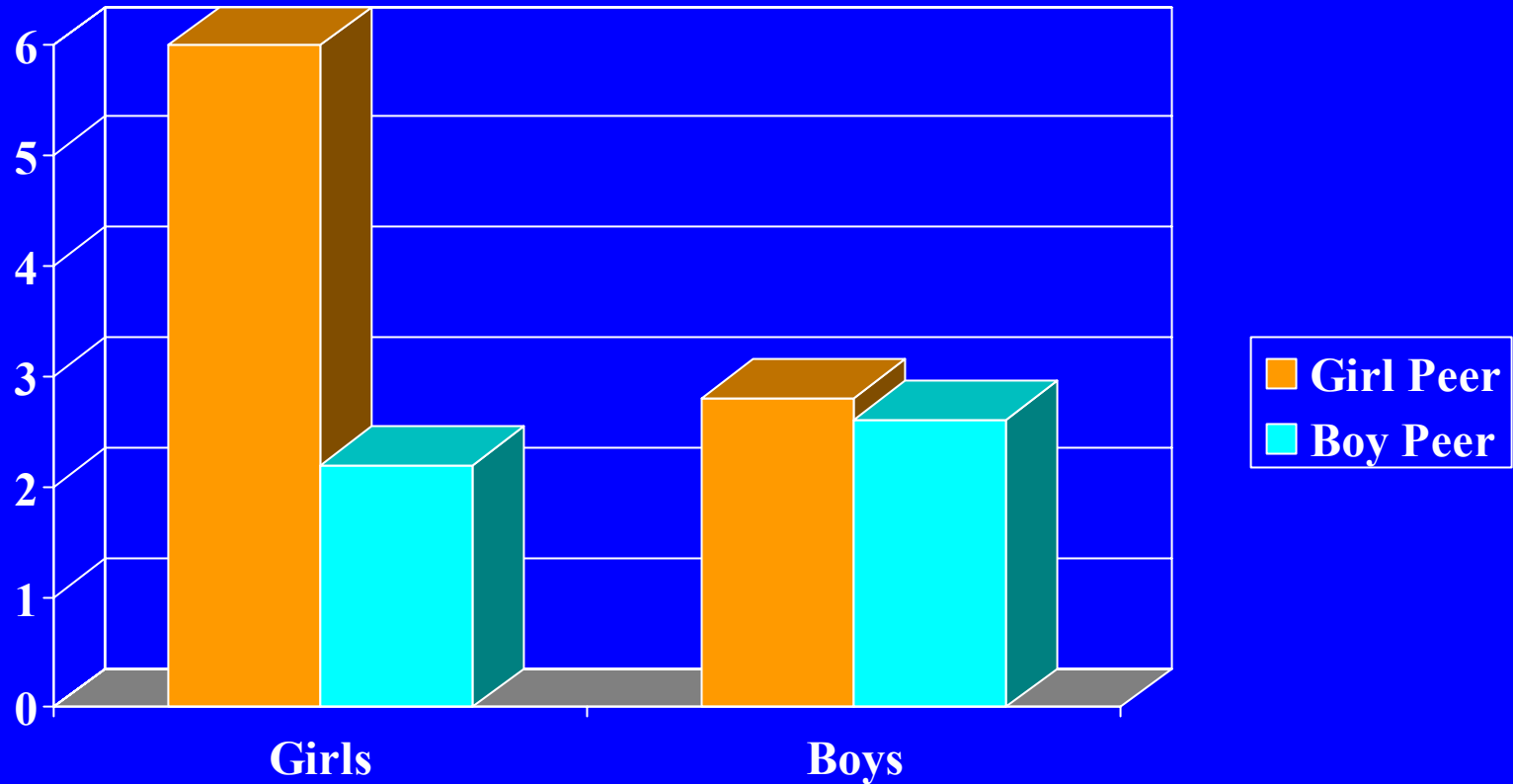
- At Visit 1, toddlers equally likely to share as to grab
- At Visit 2, toddlers significantly more likely to share than to grab



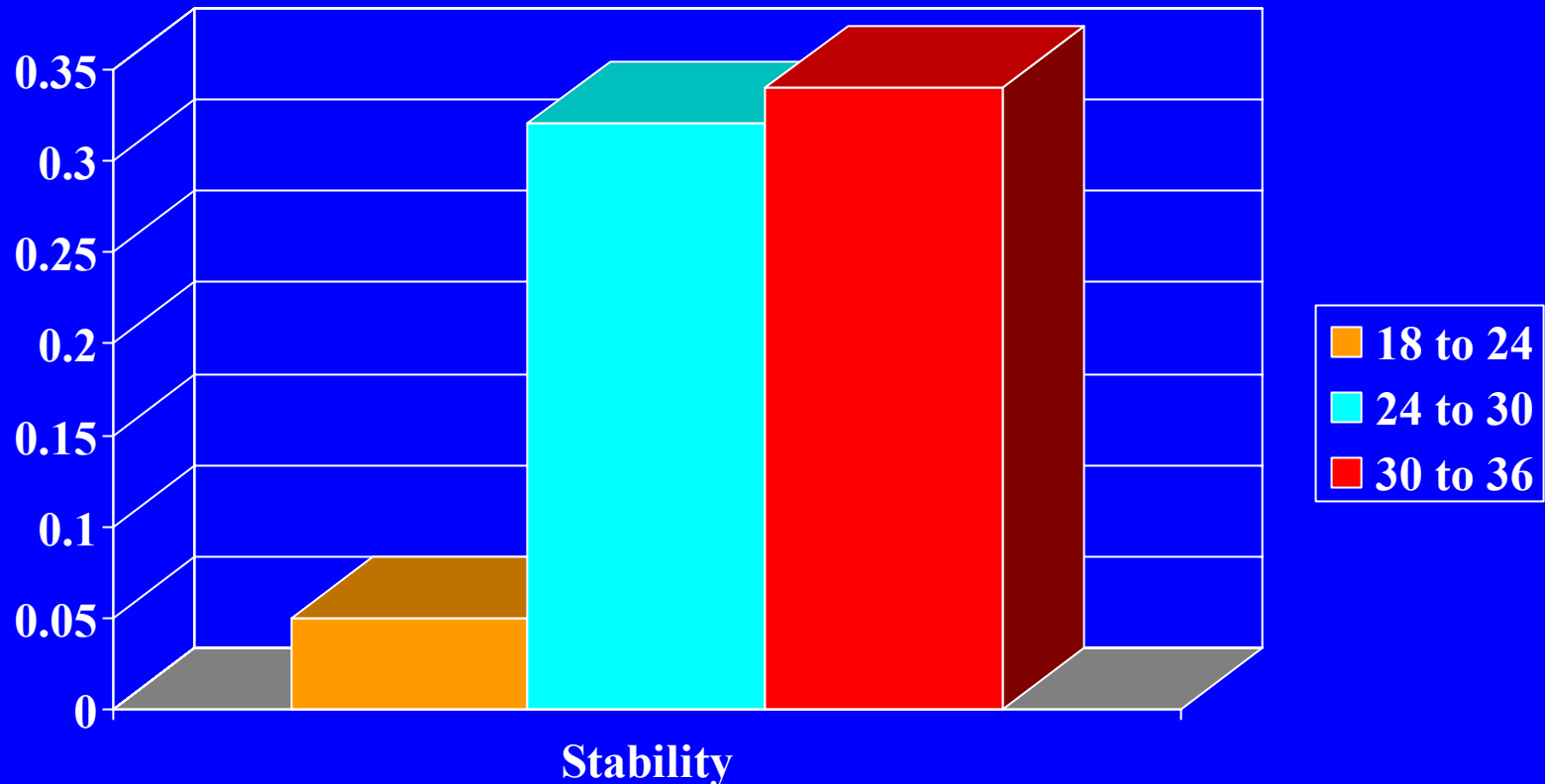
Developments from Infancy to Childhood

- Gender differences emerge
- Individual differences emerge
- Differences in what children can do and choose to do
- Les filles et les garçons se divergent
- Les différences individuelles se présentent
- La connaissance n'est pas la même que la conduite

Gender Differences (Les filles contre les garçons)

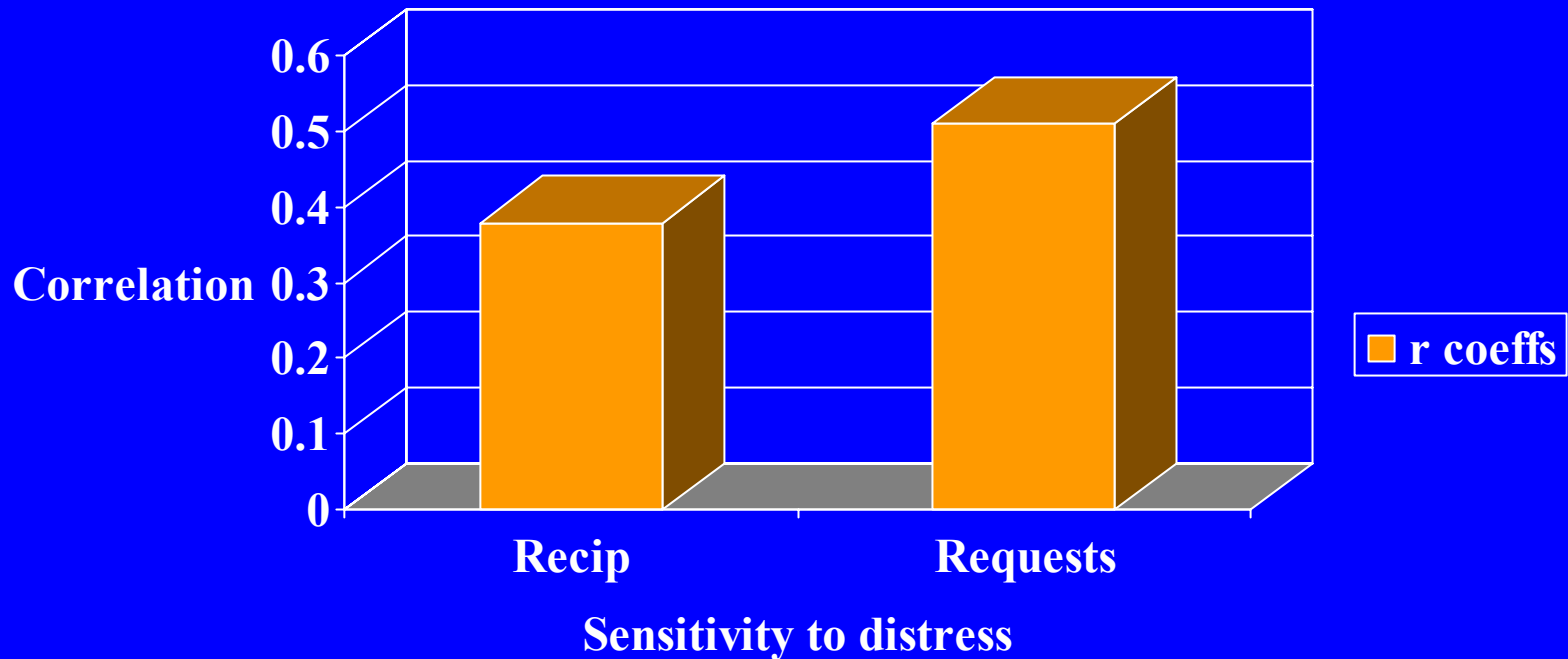


Individual Differences (Les Différences Individuelles)



Individual Differences (Les Différences Individuelles)

Consistency over time

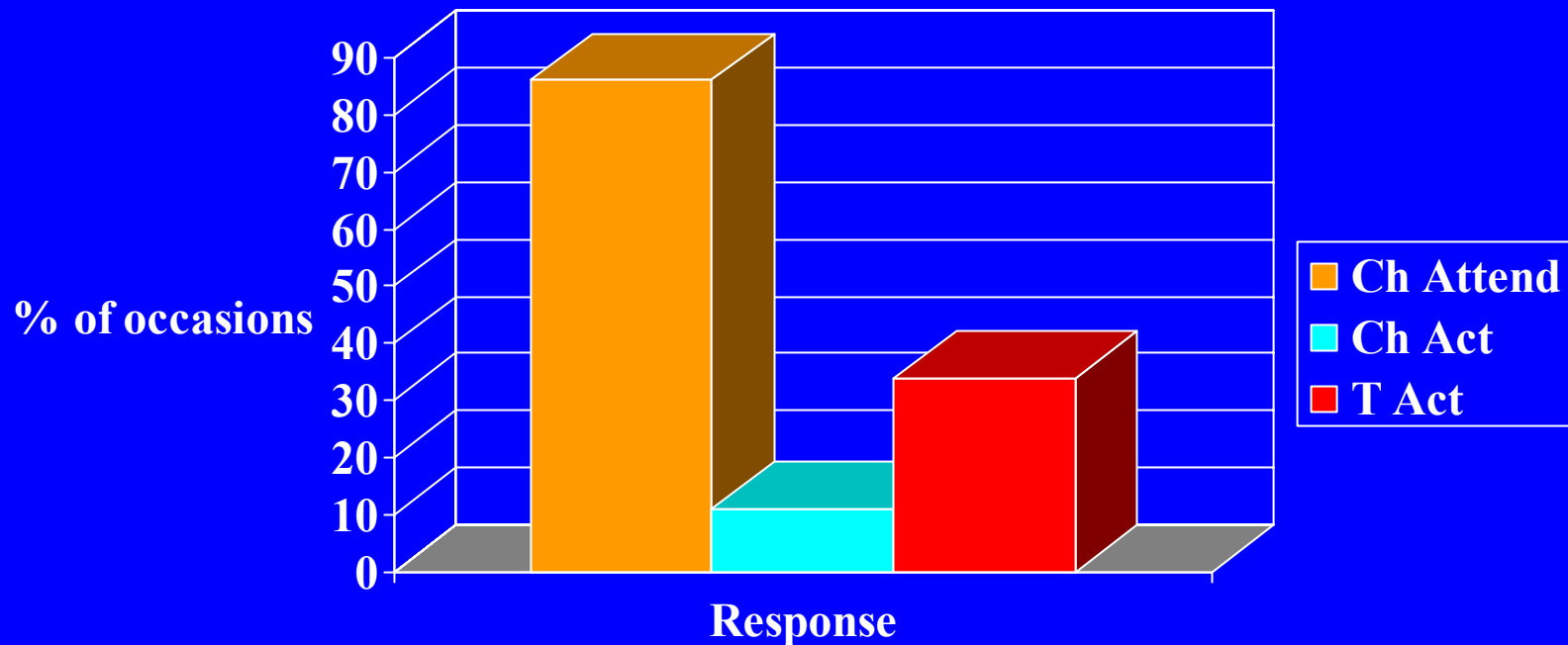


Knowledge vs. Behaviour (La connaissance et la conduite)

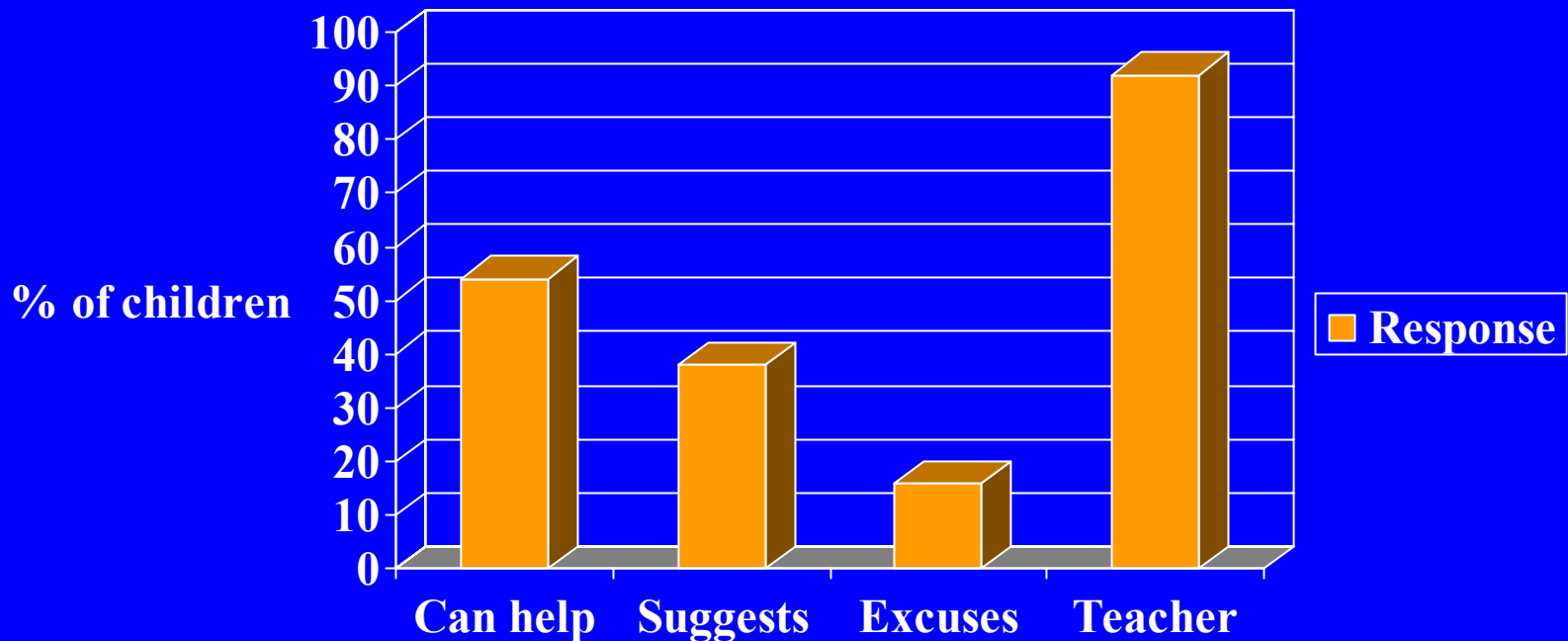
Sympathy to Distress (Caplan & Hay, 1989)

- 2 classes in a university preschool
- Average 49 months (range, 36 to 61)
- 3 teachers per class
- 2 salles de classe dans l'école maternelle
- Le moyen = 49 mois (36 à 61 mois)
- 3 institutrices dans la salle de classe

Children and Teachers (Les Enfants et les institutrices)



Children's Responses to Video (Les Réactions au Video)



Question 2

- Does prosocial behaviour protect children against disruptive behaviour?
- Est-ce que la conduite ‘prosociale’ est un ‘facteur protecteur’?

South London Child Development Study

- Deborah Sharp
- Channi Kumar
- Susan Pawlby
- Gesine Schmücker
 - Alice Mills
 - Helen Allen
- 179 antenatal patients in two general practices
- 171 live births
- 149 (87%) at 3 months
- 132 (90%) of those followed up at 11 yrs

Measures of Prosocial Behaviour (Les Mesures)

- Cooperation with the mother at 4 years (Etch-a-Sketch)
- Ratings by mothers, teachers and children at 11 years (SDQ)
- La coopération avec la mère à 4 ans (Etch-a-sketch)
- Les jugements des mères, les instituteurs, et les enfants à 11 ans (SDQ)

Disruptive Behaviour (La Conduite Perterbatrice)

- CBCL externalising score at 4 years
- SDQ and CAPA measures of externalising problems at 11 years
- CBCL ‘les problèmes d’extériorisation’
- SDQ and CAPA ‘les problèmes d’exteriorisation’

Prosocial and Disruptive Behaviour at 4 and 11 years

	Coop 4	CBCL 4	Prosocial 11	Ext 11
Coop 4 years		-.18+	.09	-.30**
CBCL 4			-.24*	.42***
Prosocial 11				-.56***
Ext 11				

Future Questions

(Les Questions à l'avenir)

- Can intervention programmes foster prosocial behaviour?
- Will this help prevent violence?
- Est-il possible de faire la promotion de la conduite 'prosociale' et prévenir la violence?